



1. FAILURE TO FOLLOW THESE INSTRUCTIONS COULD CAUSE A HAZARDOUS CONDITION!
2. PERFORM ALL MAINTENANCE WITH TRACTOR UNCOUPLED FROM TRAILER.
3. ALL PROCEDURES MUST BE PERFORMED BY QUALIFIED PERSONNEL.
4. DO NOT USE ANY FIFTH WHEEL THAT FAILS TO OPERATE PROPERLY

For parts list see LT-SK3CW-03

1. NEW PRODUCT BREAK IN LUBRICATION:

Apply a light coating of a lithium-based grease with EP additive (extreme pressure) to the low lube liner plates. The low lube plates require No further lubrication.

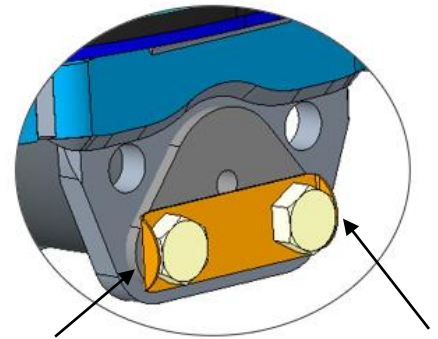
2. LUBRICATION (as required):

- a. Apply a light oil to all moving parts.
- b. For sliding fifth wheels spray diesel fuel on slide path of the base plate.

3. INSPECTIONS AND ADJUSTMENTS:

(Perform the following every 3 months or 30,000 miles)

- a. Inspect the mounting – repair or replace any missing or damaged fasteners or broken components.
- b. Inspect bracket pin bolts, make sure locking tabs are properly securing the bolts in place (see figure #1).
- c. Inspect the fifth wheel for bent, worn or broken parts. Replace with genuine JOST parts.
- d. Inspect the low lube plates and replace if damaged or when the plate wears down to the securing bolts. It is normal for the outside edges of the plate to pucker slightly. This will not affect their performance.



Locking tabs properly securing bolts

FIGURE 1

e. Check adjustment - Lock and unlock several times using a lock tester. Check that the locking mechanism functions properly (see operating instructions).

1. The lock is properly adjusted if: The wheel locks and unlocks easily each time and the lock tester rotates freely.
2. The lock is too loose if: You feel fore-aft play when pulling and pushing on the lock tester handle (see figure 2)
3. The lock is too tight if: The lock tester does not rotate freely when attempting to rotate it in the lock. (See figure 3)

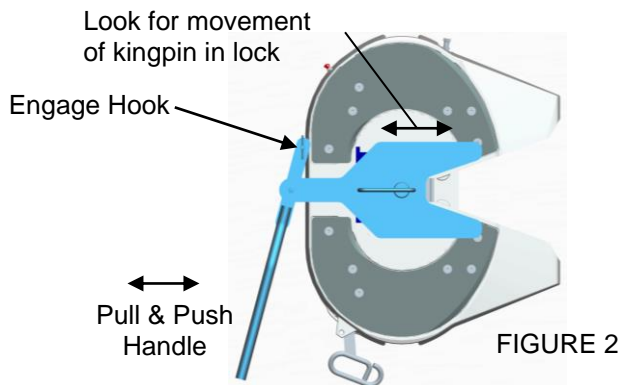


FIGURE 2

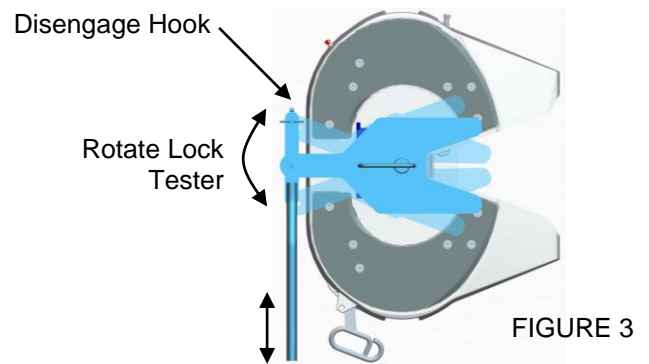


FIGURE 3

f. Correct improper adjustment

1. If it is too tight: insert 5/16 Allen Wrench into adjustment screw (see figure 4) clockwise one full turn. Then, lock and unlock several times, repeat if necessary.
2. If it is too loose: turn the adjustment screw counterclockwise (see figure 4) one full turn. Then, lock and unlock several times, repeat if necessary.

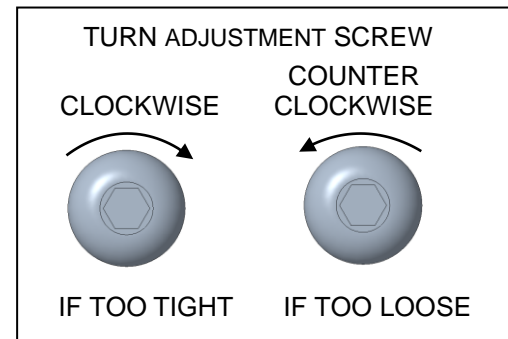
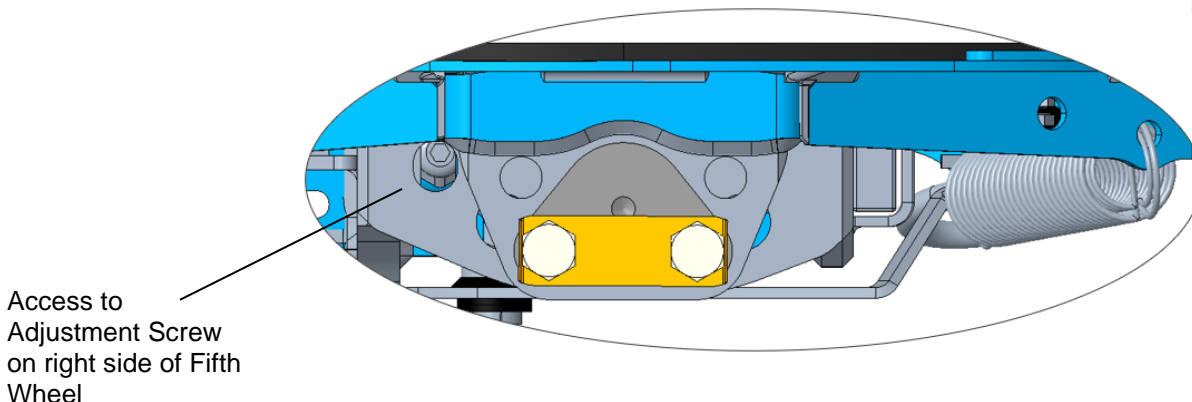


FIGURE 4



4. LUBE PLATE REPLACEMENT PROCEDURES (using kit SK3106-003):

- a. Remove the securing bolts and hex nuts using a T45 torques bit.
 - 1. **Nuts (SK-70414-02) not included in kit. Order separately (11 required).**
- b. Remove the plates and clean any debris from the Low Lube pockets of the topplate.
- c. Install the new plates.
- d. Install the T45 torques securing bolts and tighten to 34 FT-LBS.

5. SLIDING FIFTH WHEEL MECHANISM INSPECTION

- a. Inspect the bracket for any cracks or missing and damaged parts.
- b. Inspect the locking plungers for full engagement.
- c. Check the locking mechanism for proper operation.
 - 1. If plungers won't release – check air cylinder.
 - 2. If plungers are loose – check plunger springs for proper compression.
Replace if required.

For complete parts list and rebuild kit order numbers refer to the Owner's Manual provided with your fifth wheel.

or

Contact our sales department at:

800-253-5105