



Kingpin Product Line

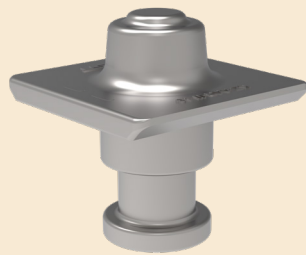
AAR Cruciform



Part Number	Bolster Plate Thickness
-------------	-------------------------

KZ-AAR-X2-2.4	1/4"
KZ-AAR-X3-2.4	5/16"
KZ-AAR-X4-2.4	3/8"
KZ-AAR-X2-3.6	1/4"
KZ-AAR-X3-3.6	5/16"
KZ-AAR-X4-3.6	3/8"

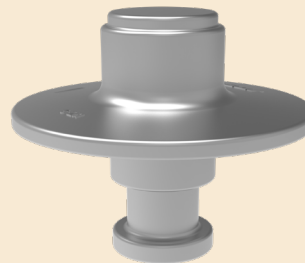
AAR Square



Part Number	Bolster Plate Thickness
-------------	-------------------------

KZ-AAR-W1-1.8	3/16"
KZ-AAR-W2-1.8	1/4"
KZ-AAR-W3-1.8	5/16"
KZ-AAR-W4-1.8	3/8"

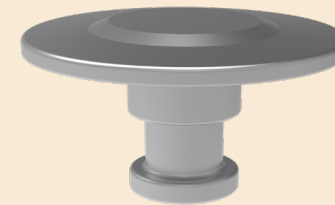
SAE Spool



Part Number	Bolster Plate Thickness
-------------	-------------------------

KZ S2-2.0	1/4"
KZ S3-2.0	5/16"
KZ S4-2.0	3/8"
KZ S5-2.0	1/2"
KZ S2-2.9	1/4"
KZ S3-2.9	5/16"
KZ S4-2.9	3/8"
KZ S5-2.9	1/2"

SAE Mushroom



Part Number	Bolster Plate Thickness
-------------	-------------------------

KZ-T2	1/4"
KZ-T3	5/16"
KZ-T4	3/8"
KZ-T5	1/2"
KZ-T6	5/8"

Bolt In



Part Number	Bolster Plate Thickness
-------------	-------------------------

KZ 1007	1/4" (7mm)
KZ 1008	5/16" (8mm)
KZ 1010	3/8" (10mm)
KZ 1012	1/2" (12mm)