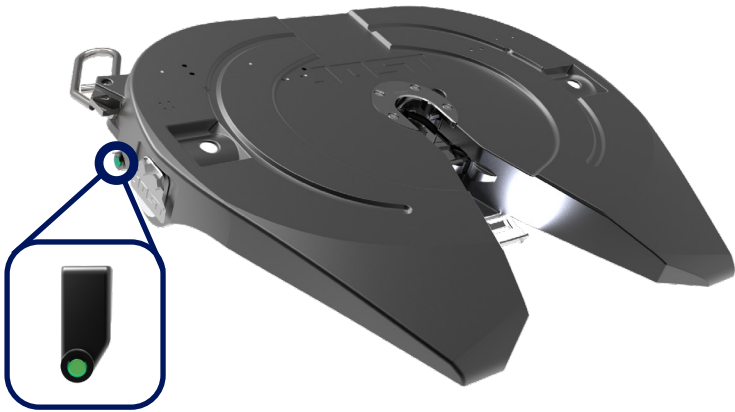


LOC-LIGHT SENSOR



Security & Illumination

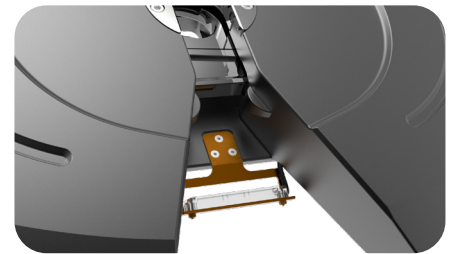
The Loc-Light system enhances your JOST fifth wheel with the addition of our two-sensor monitoring system as well as a LED throat illumination.

The dual-sensor system is connected to the Go/No-Go indicator light located next to the handle. A proper coupling with the handle and kingpin in the locked position will be lit up as green or “Go light”. If the system does not detect the handle and/or kingpin in the proper locked position, the light will flash red or “No-Go light”

The throat illumination light option automatically turns on when the system is engaged. The light shines directly into the throat of the wheel to provide a better view of the lockbar for pre-trip inspections. **Sold separately**

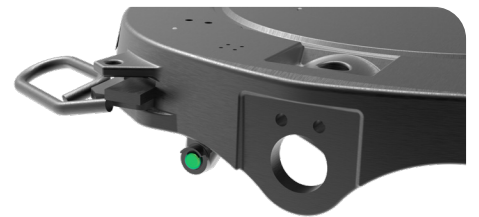
Available on:	Ratings:	Illumination light kit:
<i>Air Release Topplates</i>	<i>55,000 lbs vertical load</i>	<i>Part number SK79024-26</i>
<i>Converter Dolly Topplates</i>	<i>150,000 lbs pull load</i>	

To place an order please call our sales team: (800)-253-5105



Throat Illumination

LED Light shines into the throat for clear inspection of the coupled fifth wheel. **Sold separately**



Go Light

Green light indicates the fifth wheel is properly coupled, with both kingpin and handle in the locked position.



No-Go Light

Flashing red light with audible alert indicates that the kingpin and/or handle are not properly coupled.