



OPERATING INSTRUCTIONS For No-Tilt Convertible Fifth Wheel

As you are aware there are many potential hazards in the operation of any dump vehicle. The Jost No-Tilt Fifth Wheel is not intended to withstand or resist rollover forces. No fifth wheel manufacturer produces such a product.

The Jost No-Tilt Convertible Fifth Wheel is designed for use with both conventional trailer and frameless dump trailer applications.

When the pivot stops are engaged the topplate is rigid and does not articulate. This configuration is used for frameless dump trailers where the articulation is provided in the trailer upper coupler.

When the pivot stops are disengaged the topplate is free to articulate. This configuration is used for framed or conventional trailers that require articulation.

This publication covers only the operation of the No-Tilt mechanism. See Jost publication LT-SK37U-02 for coupling/uncoupling procedures.



**VEHICLE ROLLOVER MAY OCCUR CAUSING
SERIOUS DAMAGE TO THE TRACTOR, TRAILER AND
FIFTH WHEEL!**

Follow these recommendations:

- 1. Make sure the foundation under the tractor and trailer is level and stable.**
- 2. Do not attempt to dump in high winds.**
- 3. Do not leave material in the dump box for an extended period of time during freezing temperatures.**

OPERATION WITH FRAMELESS TRAILERS



ENGAGE THE NO-TILT WITH FRAMELESS DUMP TRAILERS ONLY! OPERATION STABILITY AND POTENTIAL DAMAGE TO TRAILER AND FIFTH WHEEL WILL OCCUR IF IT IS NOT ENGAGED!



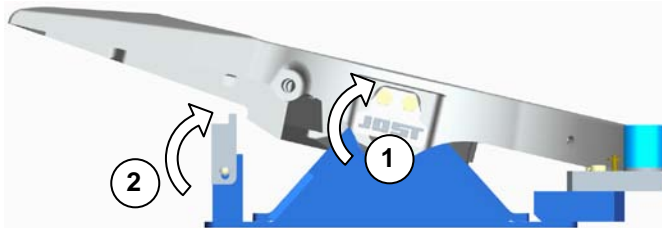
Slider Engaged



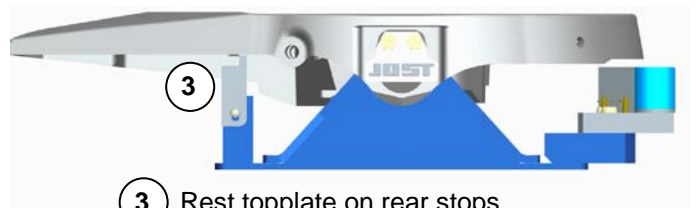
Stationary Engaged

TO ENGAGE THE NO-TILT FEATURE

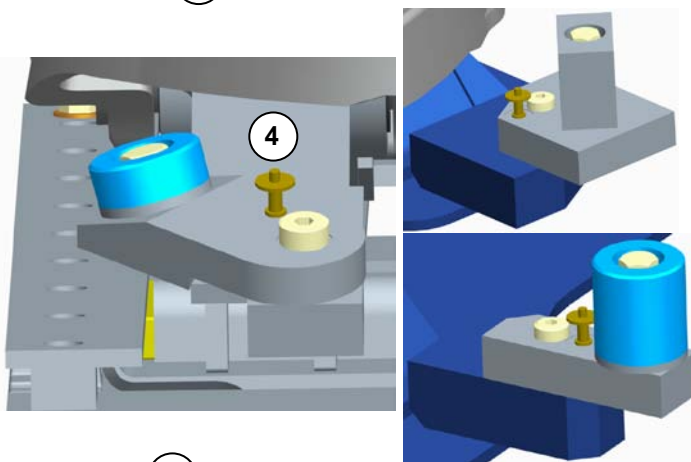
1. Articulate fifth wheel forward.
2. Rotate both rear stops up.
3. Articulate fifth wheel rearward until the topplate rests upon both rear stops.
4. Press the release button on the lock pin and remove from pivot block.
5. Rotate the front stop into position.
6. Press the release button and reinsert the lock pin. Be sure that the lock pin locks the pivot block in the new position.
7. Repeat steps 4-6 for the front stop on the opposite side.



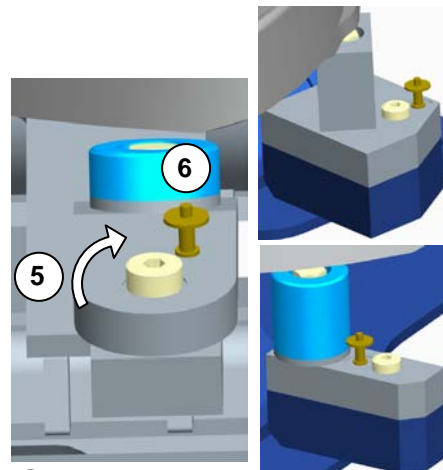
- 1 Articulate fifth wheel forward.
- 2 Rotate rear stops upward.



- 3 Rest topplate on rear stops.



- 4 Press the release button on the lock pin and remove pin.



- 5 Rotate front stops into position.
- 6 Press the release button and reinsert pin.

OPERATION WITH CONVENTIONAL/FRAMED DUMP TRAILERS



DISENGAGE THE NO-TILT WHEN USING CONVENTIONAL AND FRAMED DUMP TRAILERS! SERIOUS DAMAGE WILL OCCUR TO THE TRACTOR, TRAILER AND FIFTH WHEEL IF IT IS NOT DISENGAGED!



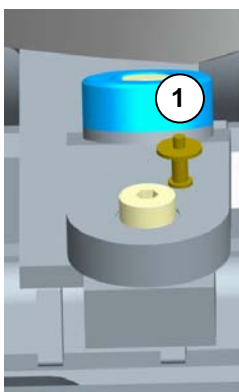
Slider Disengaged



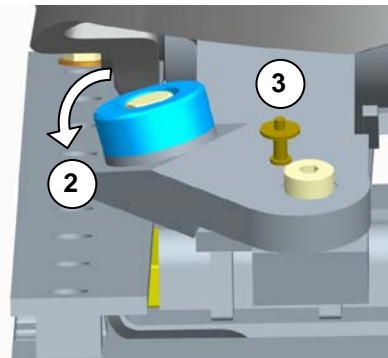
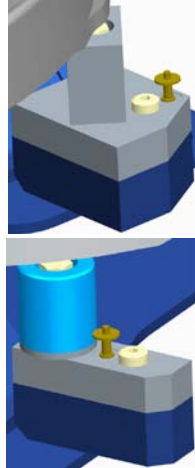
Stationary Disengaged

TO DISENGAGE THE NO-TILT FEATURE

1. Press the release button on the lock pin and remove from pivot block.
2. Rotate both front stops into the disengage position.
3. Press the release button and reinsert the lock pin. Be sure that the lock pin locks the pivot block in the new position.
4. Articulate fifth wheel forward.
5. Rotate rear stops downward.

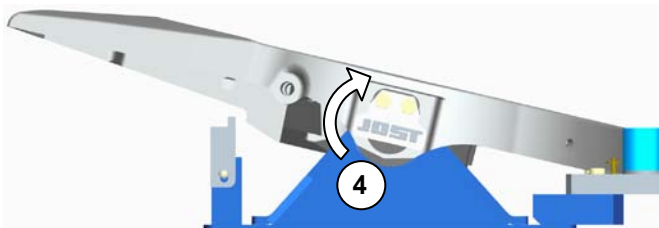
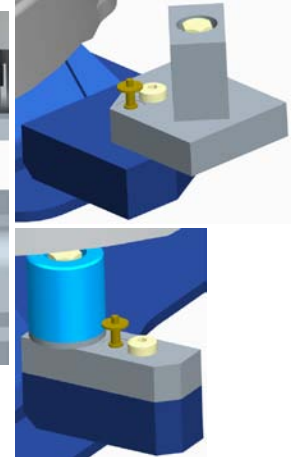


1 Press the release button on the lock pin.

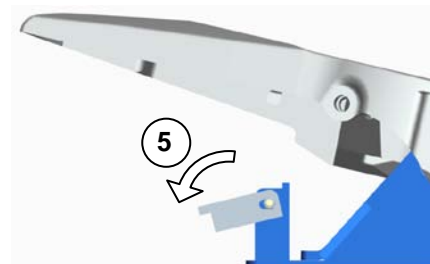


2 Rotate front stops.

3 Press the release button and reinsert pin.



4 Articulate fifth wheel forward.



5 Rotate rear stops downward.