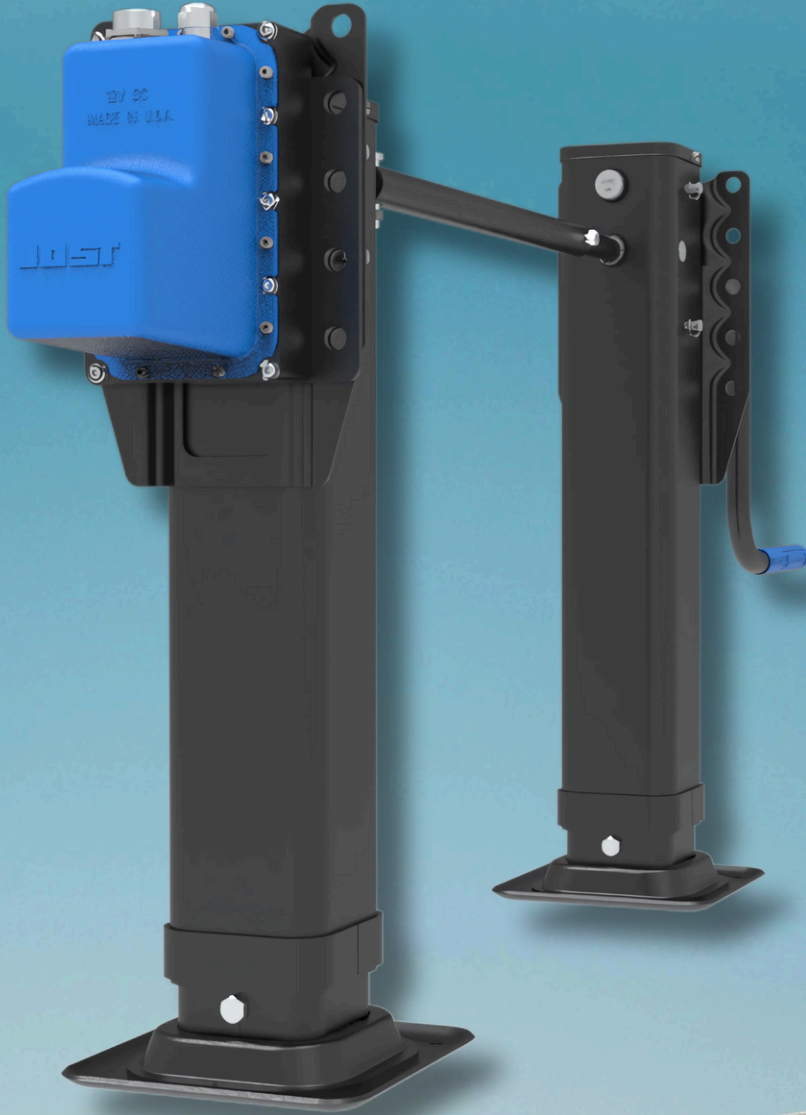


EZ Drive

The electric landing gear for increased comfort and safety



EZ Drive – The electric landing gear



... Manual cranking is now a thing of the past!

More comfort – even when accessibility of the landing gear is limited

With the electric landing gear EZ Drive, JOST sets new standards in convenience, workplace safety and efficiency. It is particularly useful when access to the landing gear is restricted and when the trailer needs to be coupled or uncoupled frequently. The EZ Drive boasts many other outstanding features, such as supporting operators and improving the fleet's availability day in and day out.

Useful and convenient

- Easier coupling and uncoupling of the trailer
- Highly useful for limited accessibility and confined spaces
- Electric raising and lowering of the landing gear
- Perfectly suited to and highly useful in frequent coupling operations

Simple and functional

- Simple operation at the push of a button
- Drive shuts down automatically in the event of ground contact
- Always automatic, fully raising and lowering
- Manual operation still possible in both low and high gear

Efficient and reliable

- Thanks to the long-term lubrication applied in the factory, re-lubrication is only necessary after three years
- Maintenance-free, patented drive on the inside
- Time saving for the coupling and uncoupling process

Reliable Buttons

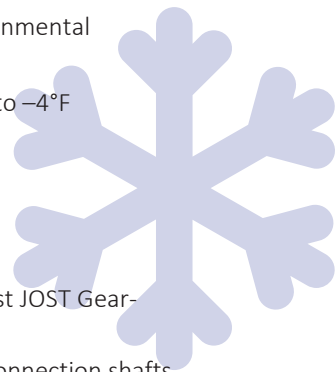
- Sealed, weather-resistant buttons for all-weather reliability
- Built for daily use in harsh fleet conditions
- Simple up/down operation at your fingertips
- Mountable in multiple locations on the trailer for operator convenience

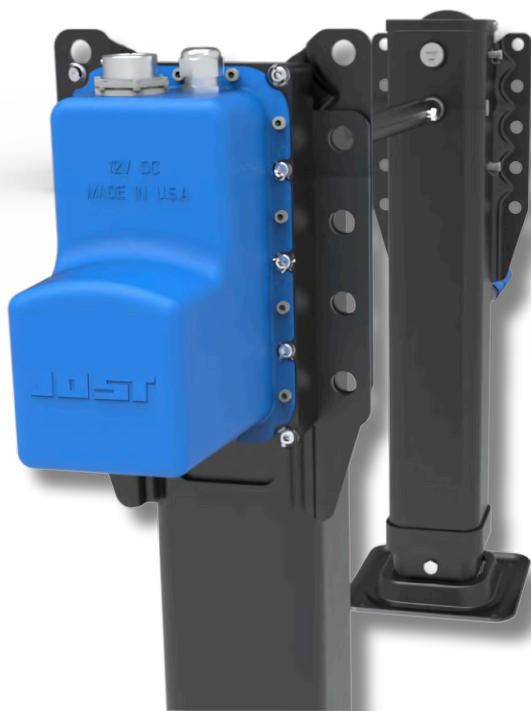
Robust and durable

- Long-lasting protection against environmental influences and falling rocks
- Suitable for outside temperatures up to -4°F
- Best-in-class reliability

Proven modular system

- Based on the highly reliable and robust JOST Gear-train
- Comprehensive range of cranks and connection shafts
- Easily mountable and replaceable foot system
- Significant increase in lifting capacity compared to similar products
- Easy and proven mounting procedure





TECHNICAL DATA (Per Kit)



Lifting Capacity:
62,500 lbs**



Max Static Load:
170,000 lbs



Temperature Rated to:
-4°F



Lift per Turn of Handle:
Low Gear*:
35 turns/inch
High Gear*:
2.5 turns/inch



Power Supply:
12 V
15 A Protection

*If operated manually

**When properly braced on a trailer

The EZ Drive motor only
operates from air to ground
and vice versa.



Technical specifications

EZ451 .G. 17

Series
EZ45

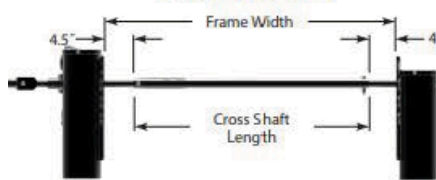
Mounting
Style

Leg Speed

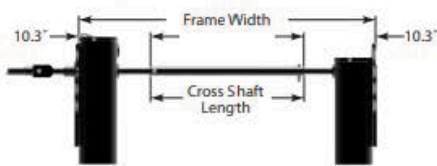
Footwear

Travel

Outside Mount - 0



Inside Mount - 1



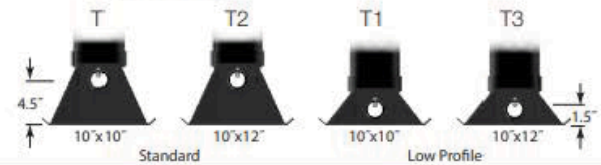
Leave Blank To Order a Set
Gear Side Leg Only - R
Non-Gear Side Leg Only - L

14 - 14" Travel
17 - 17" Travel
19 - 19" Travel

Cushion Foot



Sand Shoe

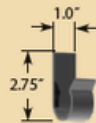


Cross Shaft



Example: B10363.56.5

Crank Hanger



B10261

Mount Style

Inside Mount - B10363
Outside Mount - B10066

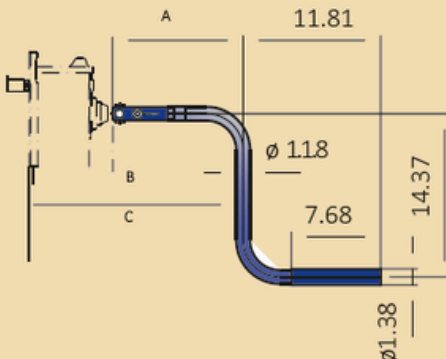
Overall Length (in)

Standard Inside Mount = 56.5"
Standard Outside Mount = 68.4"

Note on Determining Length:

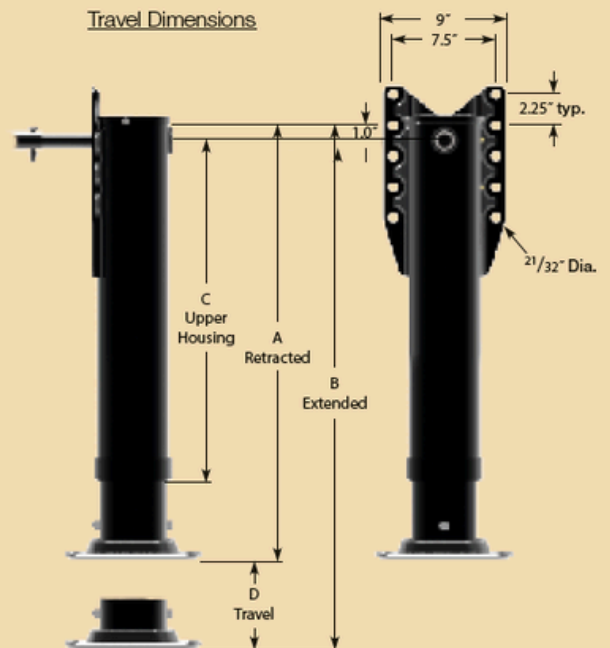
Inside Mount= Frame Width - 19.5"
Outside Mount= Frame Width - 7.6"

Crank Handle



A	B Low Gear	C High Gear
11.22	21.02	21.77
15.16	24.96	25.71
15.94	25.75	26.50
17.72	27.52	28.27
19.88	29.69	30.43
21.65	31.42	32.20

Travel Dimensions



D Travel	Shoe Style						C Upper Hsg.
	T, T2, G, G1		T1, T3		G3, G8		
	Extended	Retracted	Extended	Retracted	Extended	Retracted	
14	42 5/8"	28 5/8"	40 1/8"	26 1/8"	39 3/4"	25 3/4"	21 15/16"
17	48 5/8"	31 5/8"	46 1/8"	29 1/8"	45 3/4"	28 3/4"	24 15/16"
19	52 5/8"	33 5/8"	50 1/8"	31 1/8"	49 3/4"	30 3/4"	26 15/16"